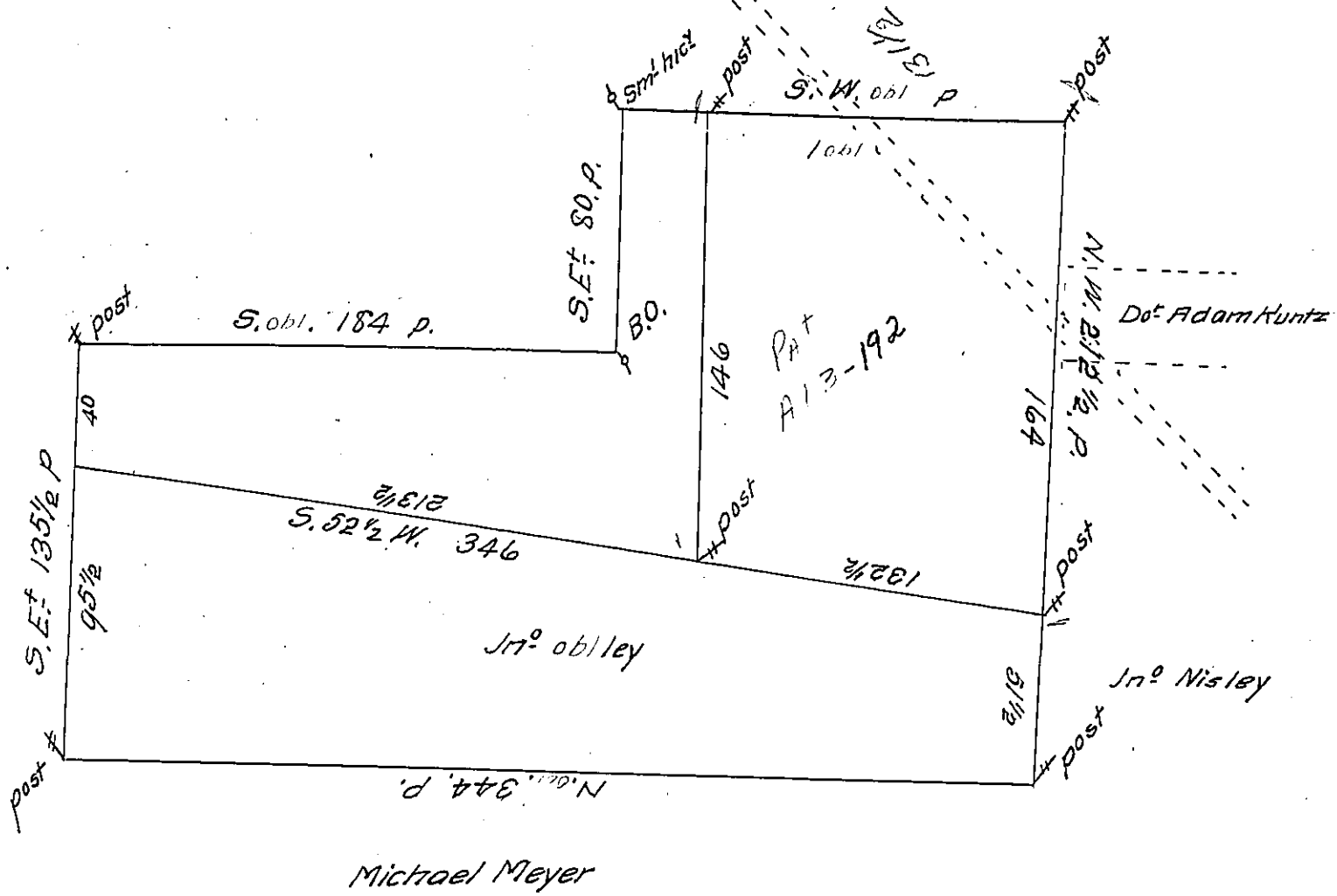


See pg 166



Beginning at a post a Corner of Jr<sup>s</sup> Nisleys Land & extending thence  
 by y<sup>e</sup> Same N. 52 1/2 E obl. p. to a post thence by other part of y<sup>e</sup> s<sup>d</sup> Tract  
 S. E. 80 p. to post thence by Peter Lunates Land S. W. 131 1/2 p to a pos obl  
 thence by The Lands of John Master & Jas<sup>s</sup> Hamilton Esq<sup>r</sup> N. W. obl 64  
 p. to y<sup>e</sup> place of Begin containing 120<sup>a</sup> & y<sup>e</sup> Al obli e 1/2 of 6 pc.

Caveat 1/5 0ar

1<sup>st</sup> Rent

Date Pat<sup>d</sup>

IN TESTIMONY that the above is a copy of the original remaining on file in  
 the Department of Internal Affairs of Pennsylvania, made  
 conformably to an Act of Assembly approved the 16th day of  
 February, 1833, I have hereunto set my Hand and caused  
 the Seal of said Department to be affixed at Harrisburg,  
 this Sixteenth day of December 1909.

*Henry A. ...*  
 Secretary of Internal Affairs.